



Pure[®]
power

Finest Human Hair

www.ellen-wille.de



Feel Real!

Man spürt die besondere Qualität des Echthaars, das wir für Pure Power verwenden. Man sieht die Hingabe, die wir in die Entwicklung jedes einzelnen Modells investiert haben. In jedem Pure-Power-Modell manifestieren sich exzellente Qualität und herausragende Expertise. Jedes ist die Summe aus Inspiration und Emotion. Eine sinnliche Erfahrung. Qualität, die man sieht und spürt. Pure Leidenschaft. Pure Power!

You can feel the special quality of the human hair that we use for Pure Power. You can see the dedication we have put into the development of every single model. Every Pure Power model embodies excellent quality and expertise. Each is the merrgence of inspiration and emotion. A sensual experience. Quality you can see and feel. Pure passion. Pure Power!

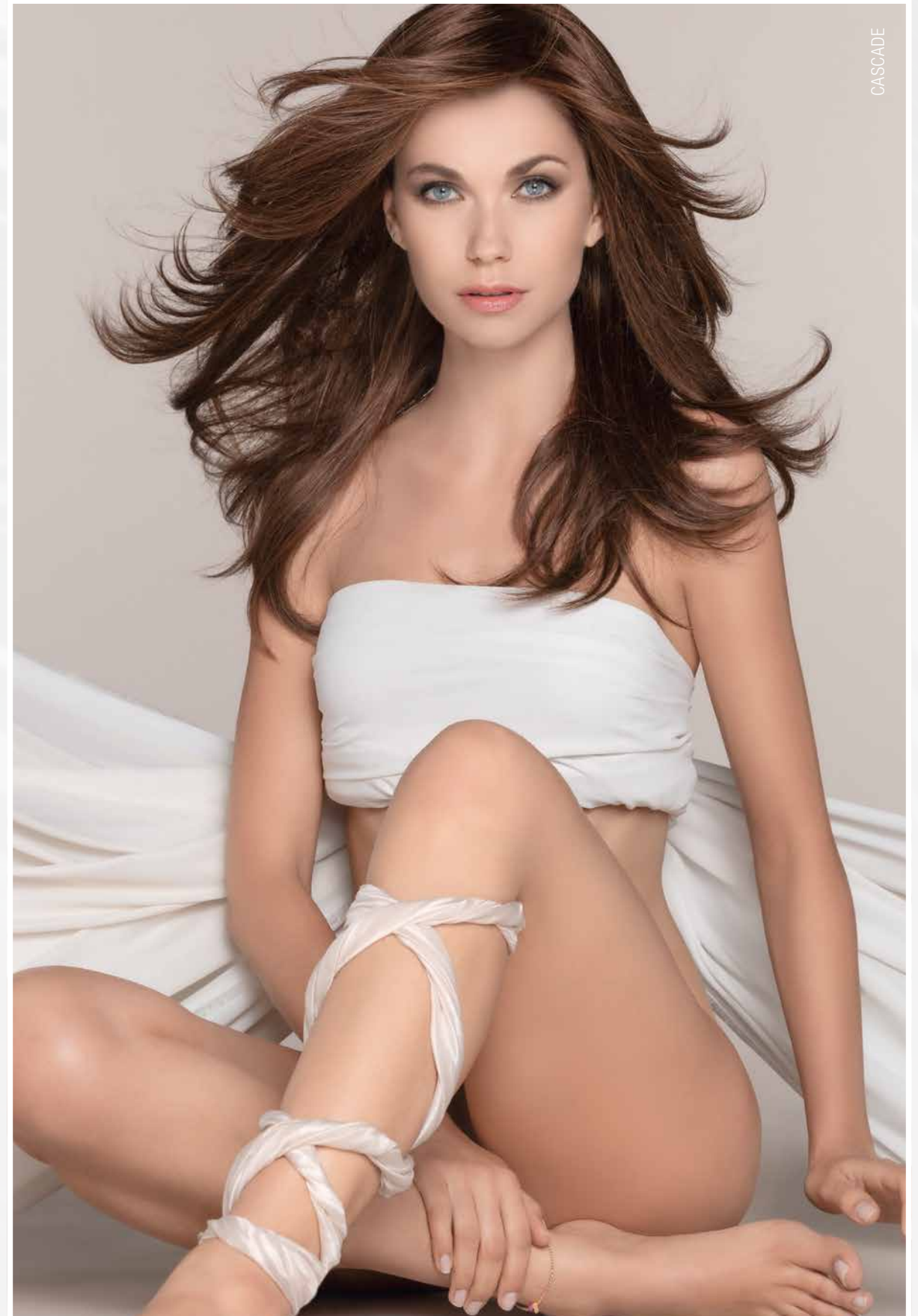
La qualité particulière des cheveux naturels que nous utilisons pour la collection Pure Power se sent au toucher. L'engagement que nous avons investi dans l'élaboration de chaque modèle se voit. L'excellence de la qualité et l'expertise exceptionnelle ressortent dans chaque modèle Pure Power. Chacun d'eux est une combinaison d'inspiration et d'émotion. Une expérience sensorielle. Une qualité qui se voit et qui se ressent. La passion pure. Pure Power !

Si sente la particolare qualità del capello vero che utilizziamo per Pure Power. Si vede l'entusiasmo che abbiamo messo nella realizzazione di ogni singolo modello. Tutti i modelli di Pure Power si distinguono per qualità e competenza. Ognuno racchiude ispirazione ed emozione. Un'esperienza sensoriale. Qualità che si vede e si sente. Pura passione. Puro potere! Pure Power!

Se puede sentir la calidad especial del cabello natural que usamos para Pure Power. Se puede ver también la dedicación que hemos puesto en la elaboración de cada uno de estos modelos. Cada modelo de Pure Power se caracteriza por su excelente calidad y conocimiento excepcional. Cada uno es la combinación entre inspiración y emoción. Una experiencia sensual. Calidad que se ve y se puede sentir. Pura pasión. Pure Power!

Почувствуйте особое качество натуральных волос, которые мы используем для коллекции Pure Power. Представьте самоотверженность, которую мы вложили в разработку каждой модели. Любая модель коллекции Pure Power отличается высочайшим качеством и выдающимся профессионализмом. Каждая является суммой вдохновения и эмоций. Чувственный опыт. Качество, которое вы видите и чувствуете. Чистая страсть. Чистая сила! Pure Power!

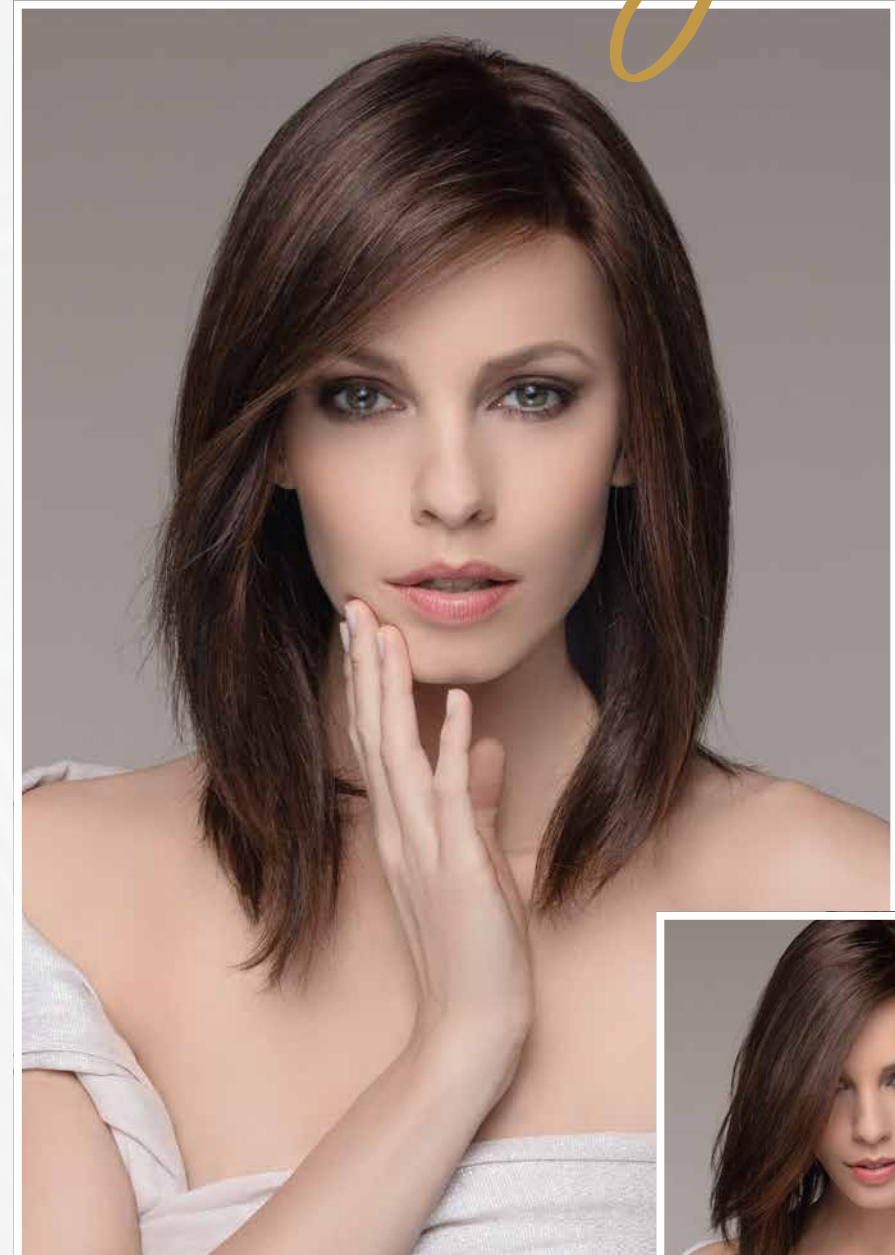
Ellen Wille



Trinity ^{★★★★★} plus



04



05



TRINITY COLOURS:
espresso mix, **darkchocolate mix**, chocolate mix,
mocca rooted, bernstein mix, sandyblonde rooted,
champagne rooted, pastelblonde rooted,
softcopper rooted

“

*Emotional design and
incomparable commitment.
Pure passion!*





08

09

AWARD COLOURS:
espresso mix, darkchocolate mix, **chocolate mix**,
mocca rooted, bernstein mix, sand mix,
sandyblonde rooted, champagne rooted

★★★★★★
Award



Wish ★★★★★★



WISH COLOURS:
espresso mix, darkchocolate mix, chocolate mix,
mocca rooted, sand mix, **sandyblonde rooted**,
pastelblonde rooted, pearlgrey mix

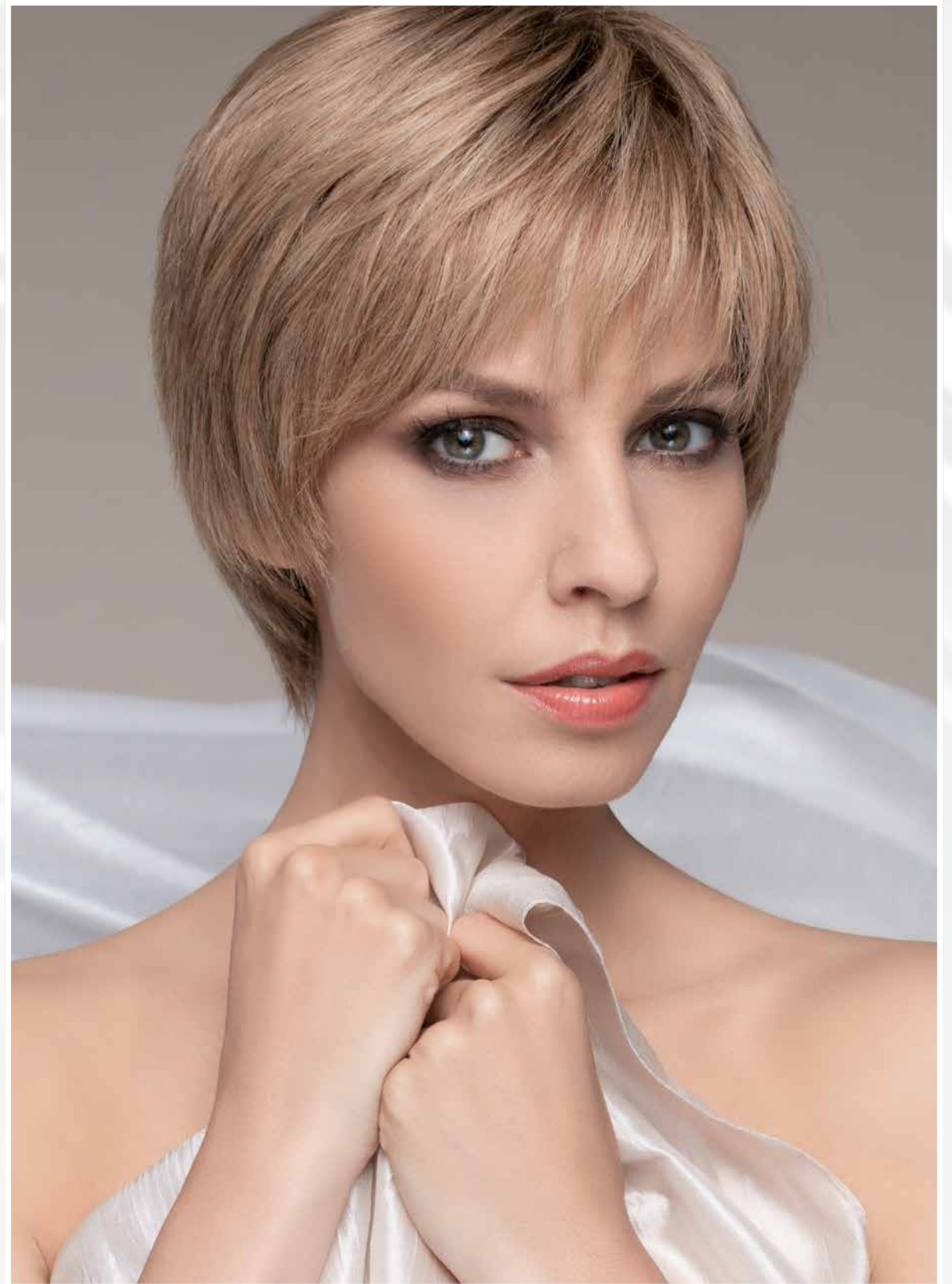


12



Ivory ★★★★★★))

IVORY COLOURS:
chocolate rooted, mocca rooted, lightbernstein rooted, **sand mix,**
sandyblonde rooted, stonegrey mix, pearlgrey mix

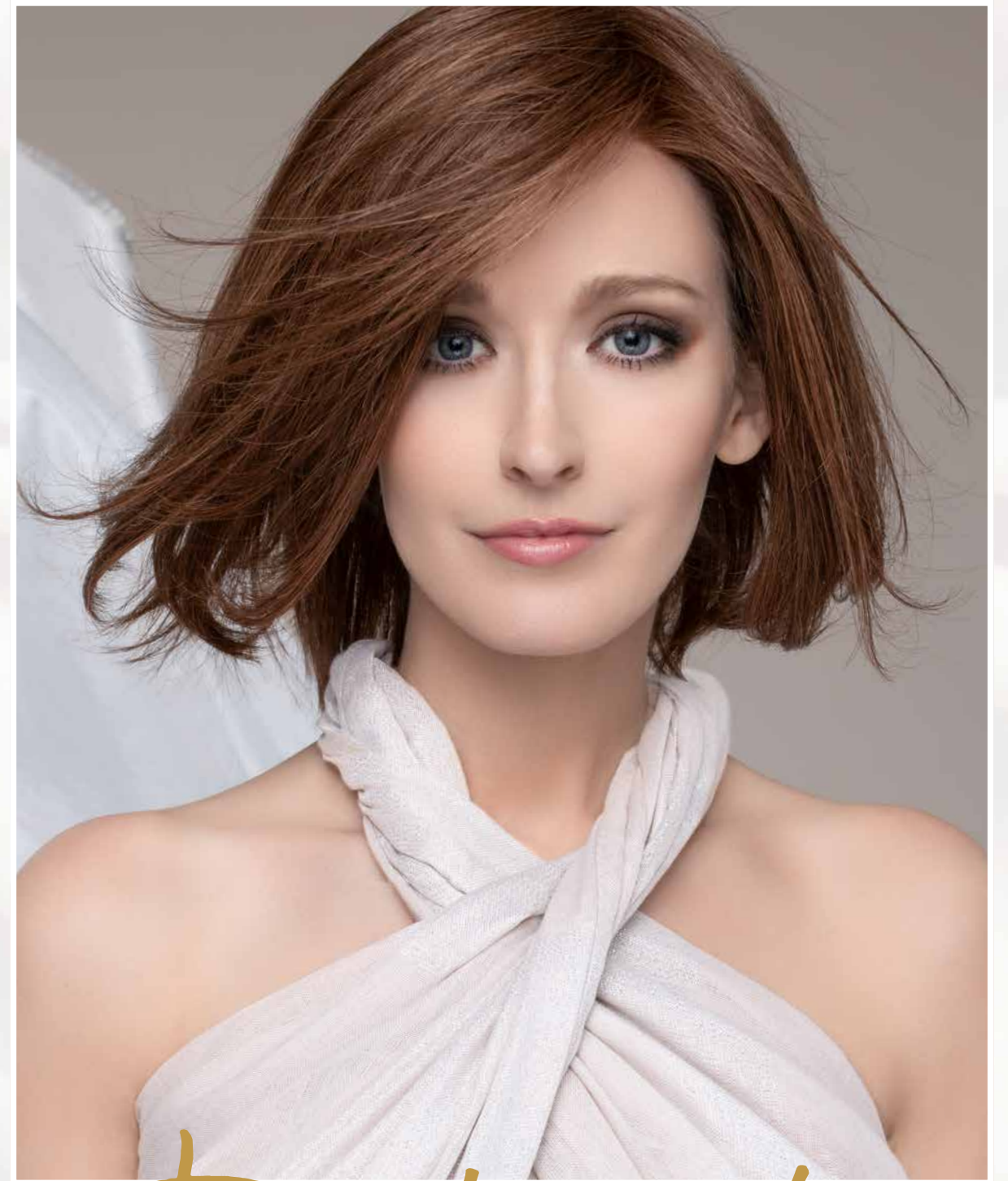


13

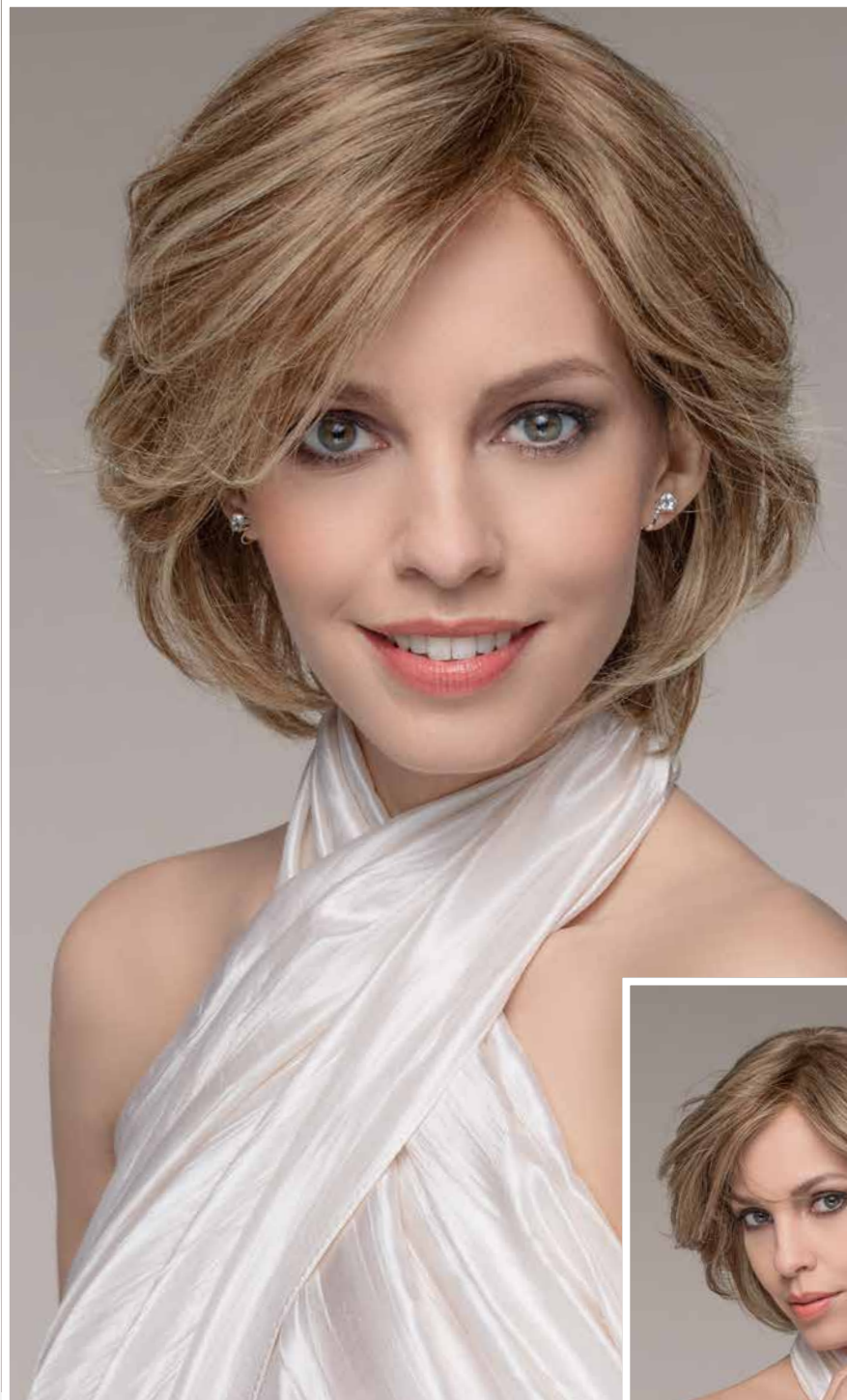


STYLING VARIATION

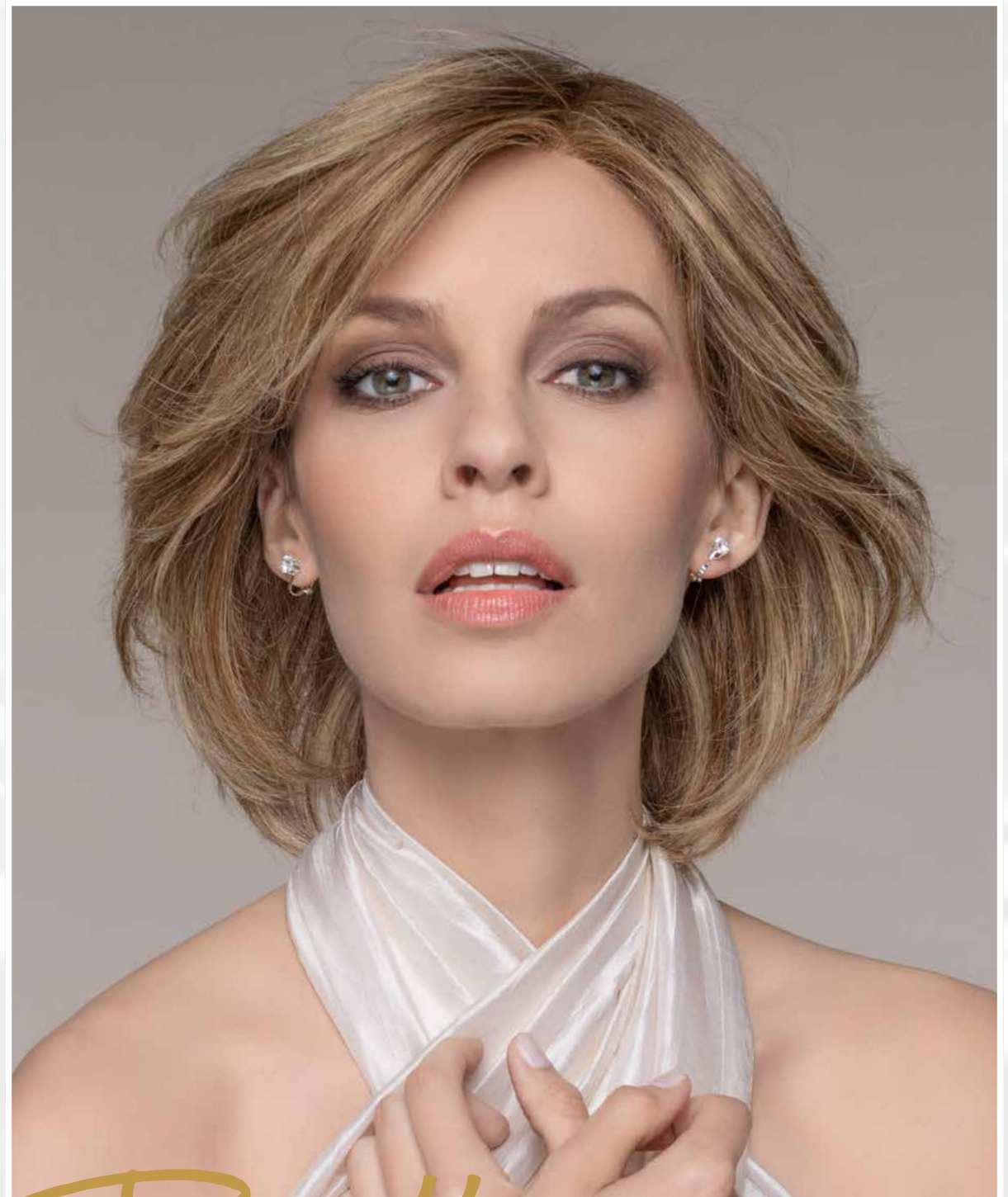
DELICATE COLOURS:
espresso mix, **darkchocolate mix,**
chocolate mix, nougat rooted, bernstein mix,
sandyblonde rooted, champagne rooted



Delicate plus



BRILLIANCE COLOURS:
espresso mix, darkchocolate mix, chocolate mix,
mocca rooted, **bernstein mix**, sand mix,
sandyblonde rooted, champagne rooted



Brilliance ^{★★★★★★}
plus



APPEAL COLOURS:

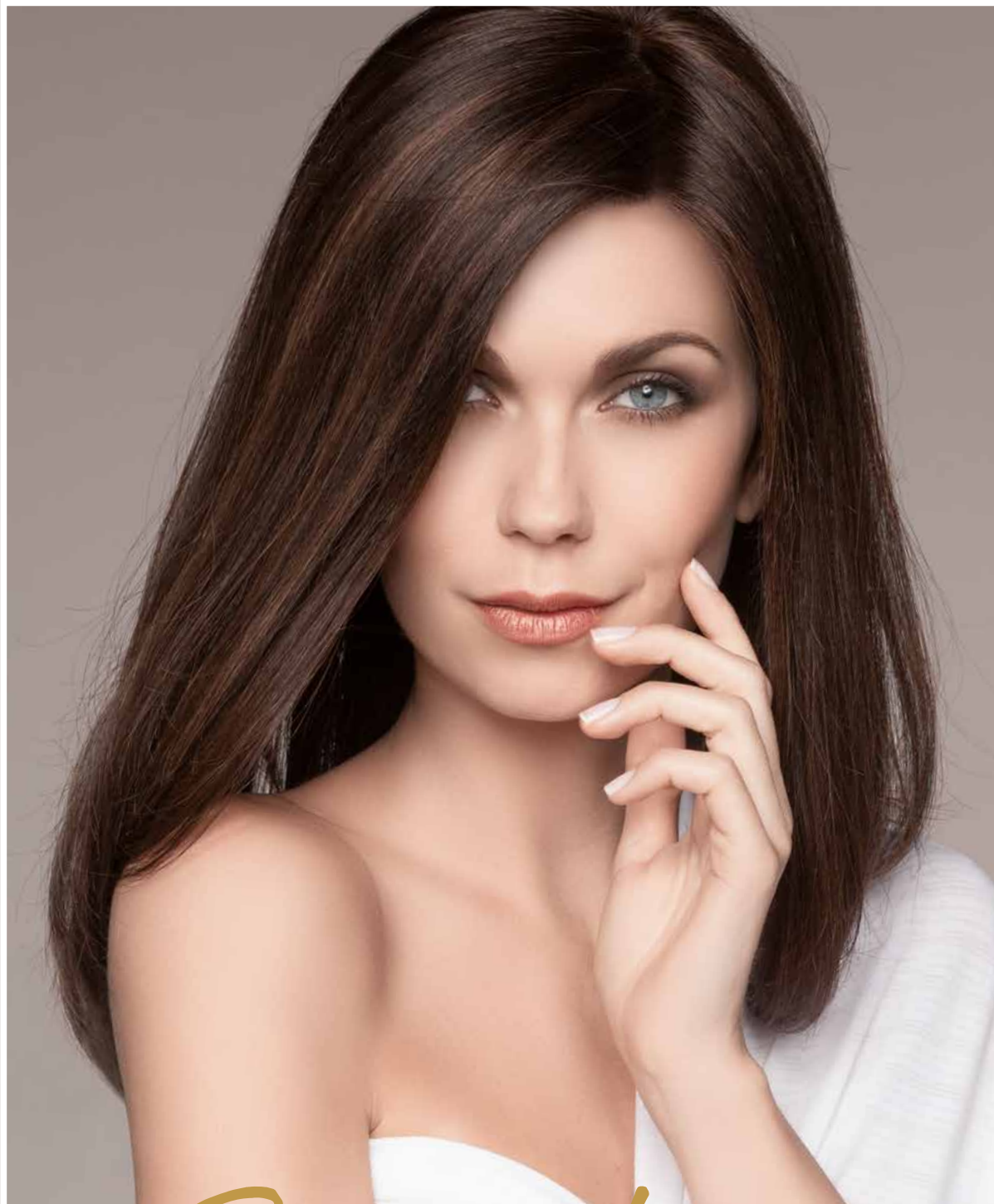
espresso mix, **darkchocolate mix**, chocolate mix, mocca rooted, lightbernstein rooted, sandyblonde rooted, champagne rooted, pastelblonde rooted, winered rooted



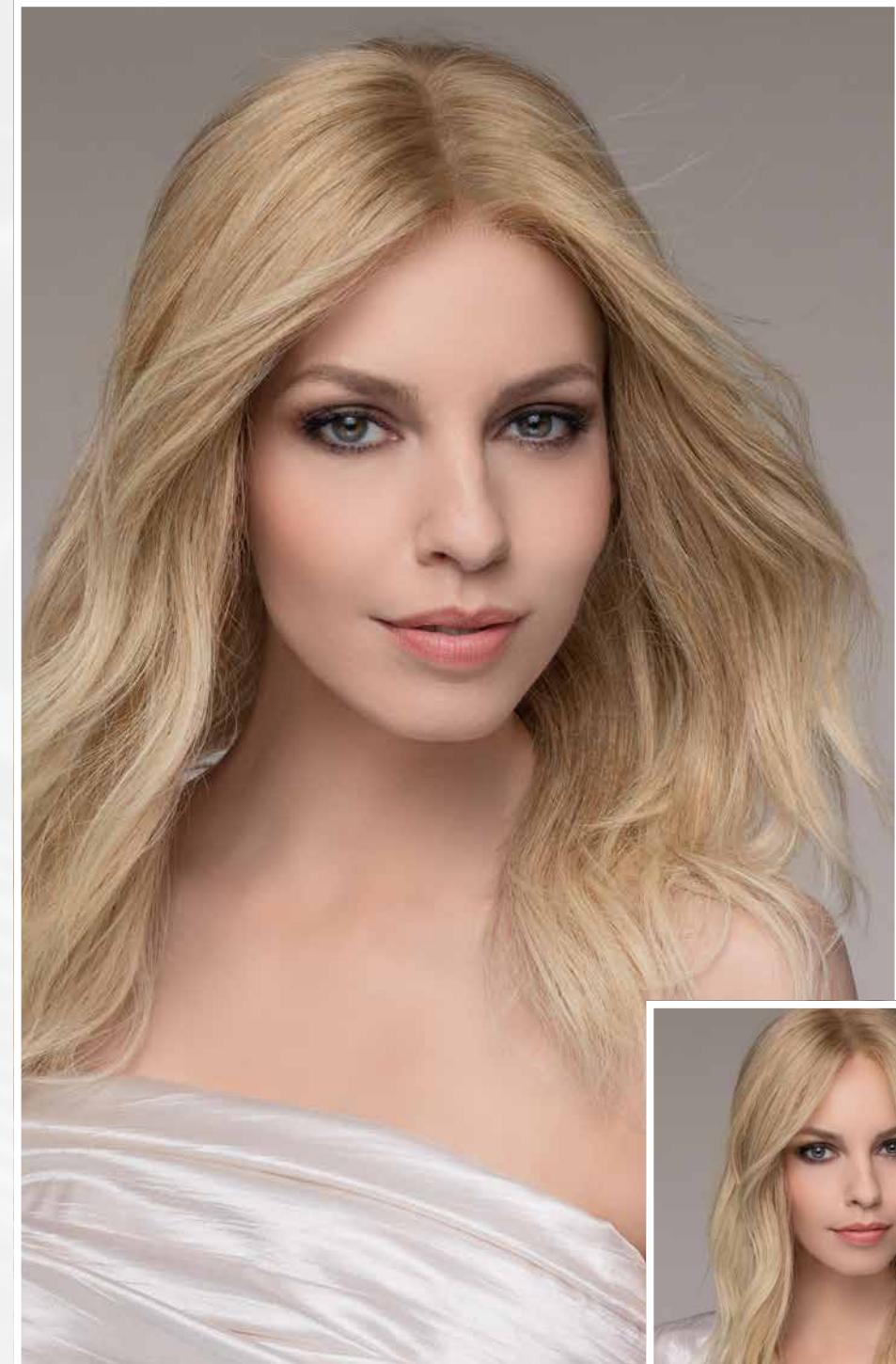


“

*An attitude of elegance,
a reflection of good taste.
Pure beauty!*



Spectra
plus

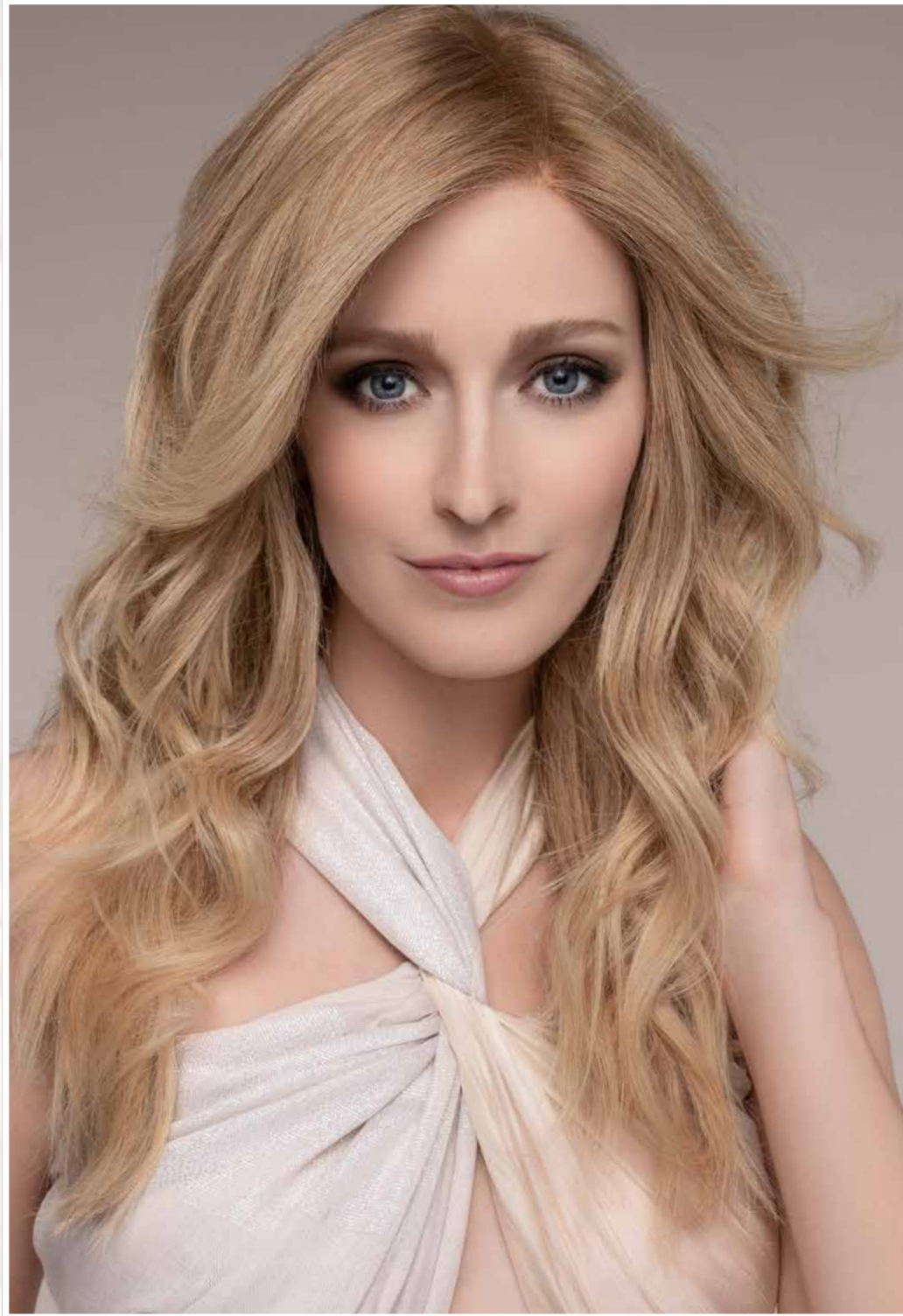


SPECTRA COLOURS:
espresso mix, **darkchocolate mix**, chocolate rooted,
lightbernstein rooted, **sandyblonde rooted**,
champagne rooted

STYLING VARIATION



STYLING VARIATION

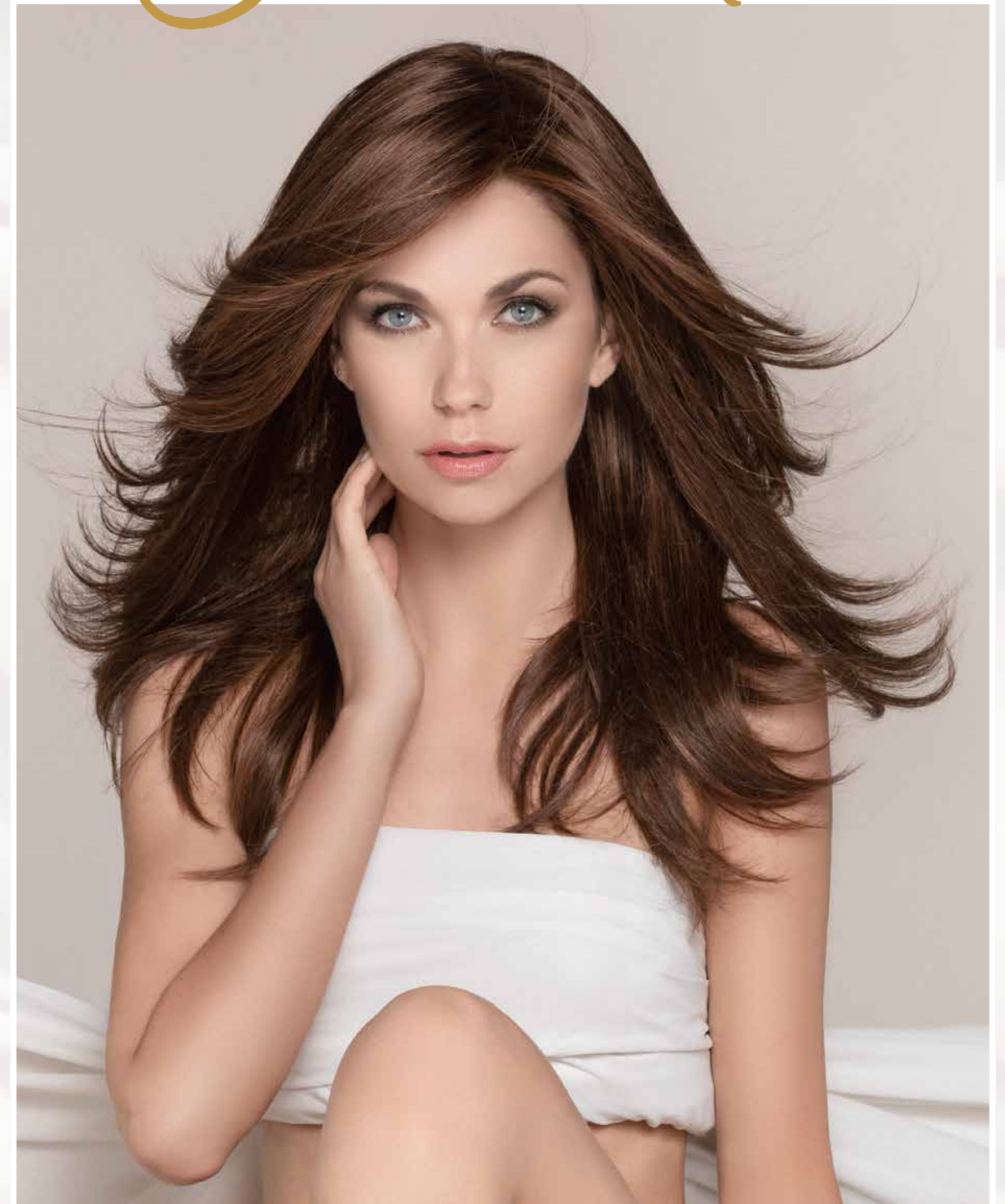


24

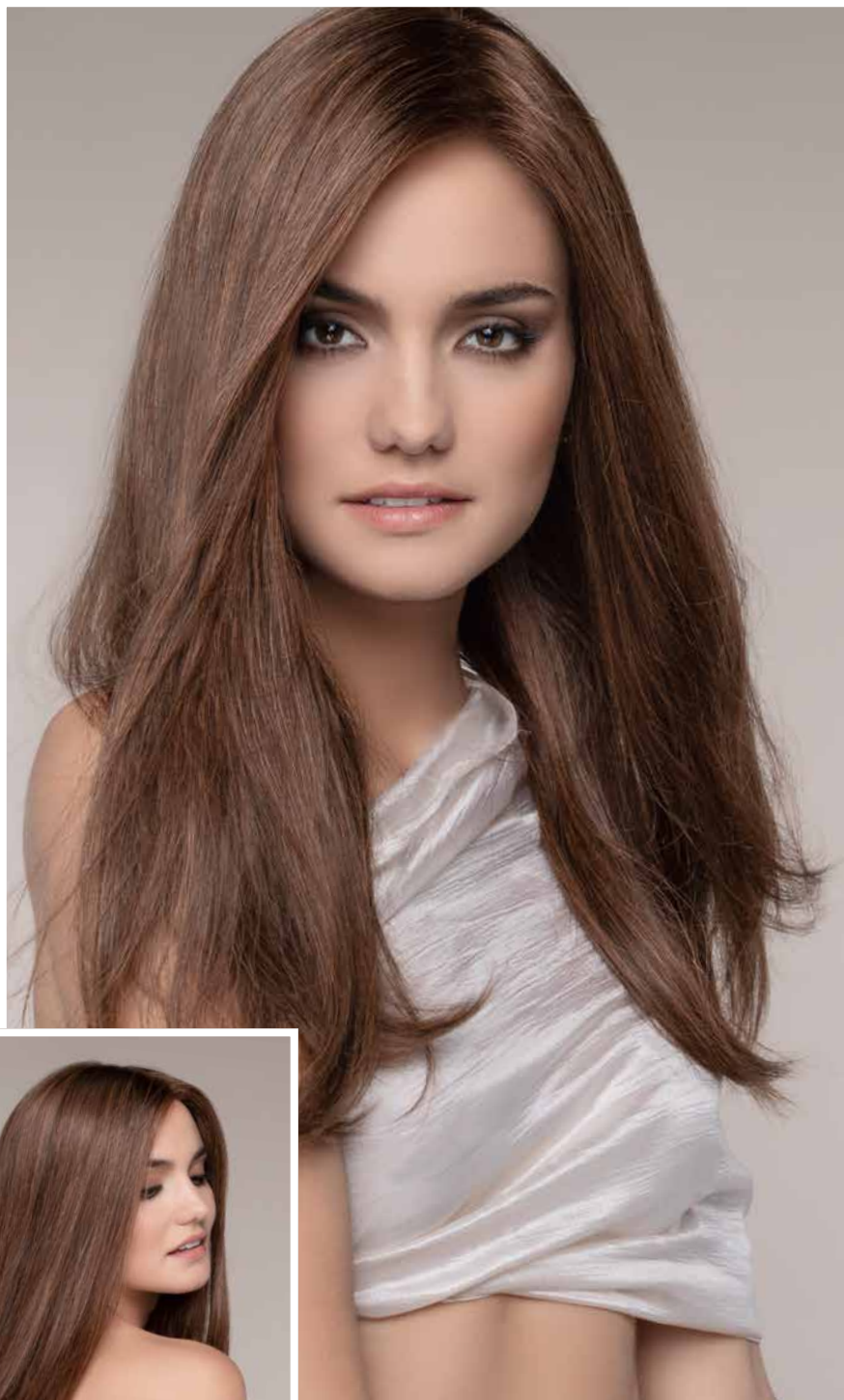
CASCADE COLOURS:

espresso mix, **darkchocolate mix**, chocolate mix, hotchocolate mix, mocca rooted, bernstein mix, **sandyblonde rooted**, champagne rooted

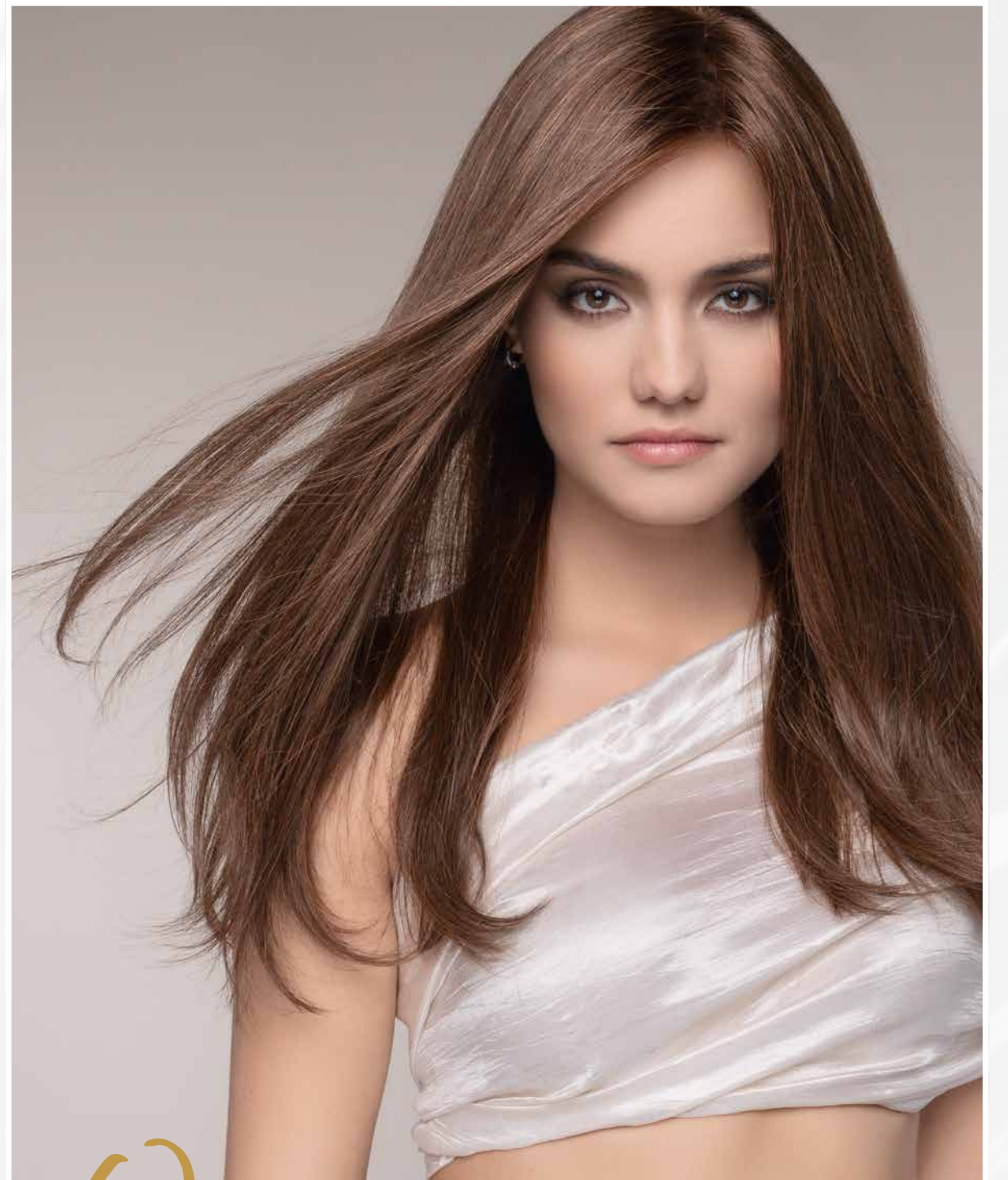
Cascade ^{★★★★★★}



25



OBSESSION COLOURS:
espresso mix, darkchocolate mix, **chocolate mix**,
mocca rooted, bernstein mix, sandyblonde rooted,
champagne rooted, cinnamon rooted



Obsession ^{★★★★★}

“

*Exceptional class,
extraordinary high-calibre.
Pure luxury!*



Emotion ^{★★★★★}

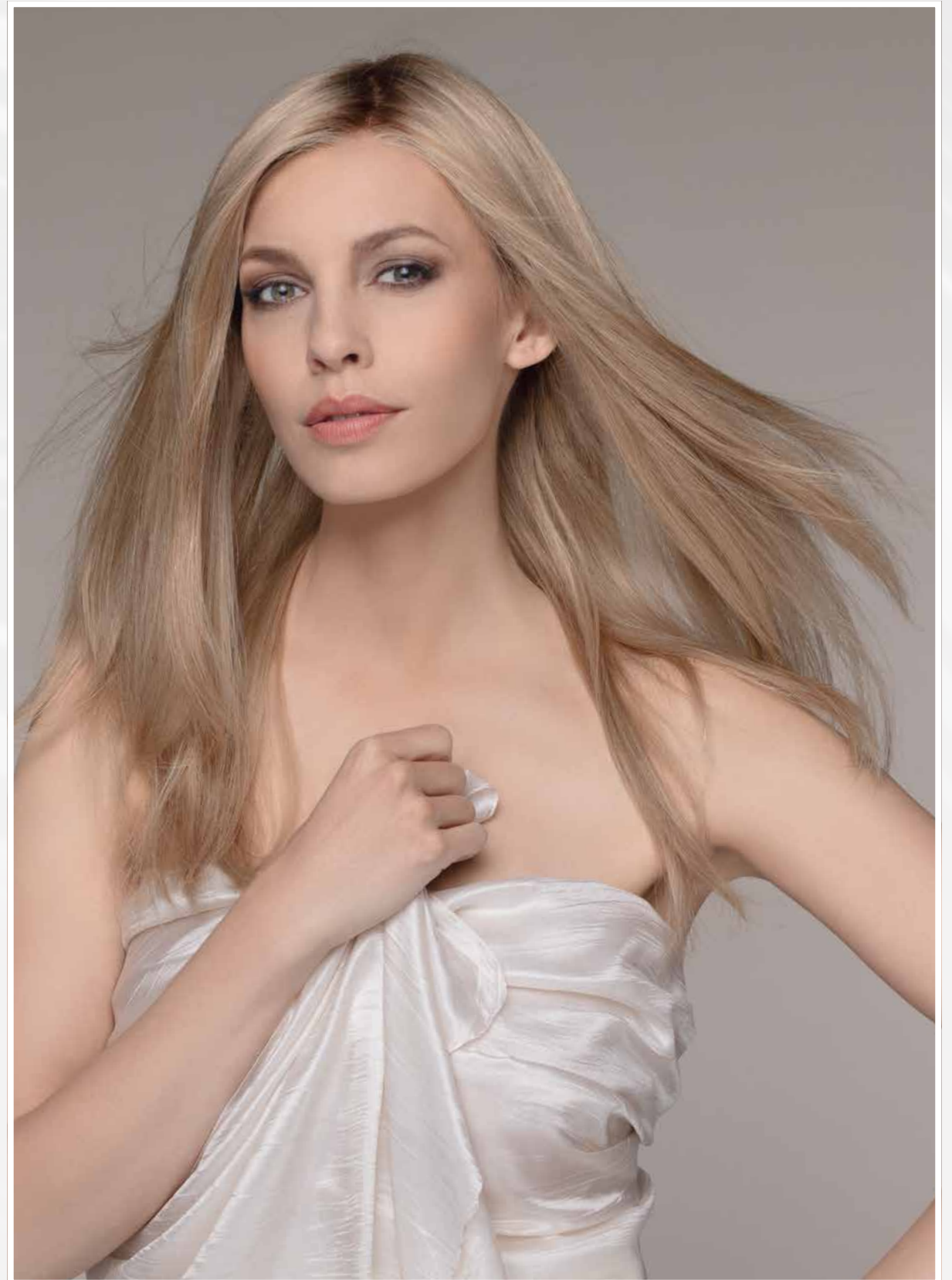


30



EMOTION COLOURS:

espresso mix, darkchocolate mix, chocolate mix, hotchocolate mix, mocca rooted, bernstein mix, **sandyblonde rooted**, champagne rooted, pastelblonde rooted



31

“

*Attention for the detail,
an aspiration for perfection.
Pure quality!*



Model OVERVIEW



REMY HAIR QUALITY

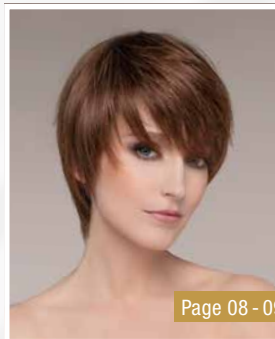


Page 18 - 19

★★★★)

APPEAL

espresso mix,
darkchocolate mix,
chocolate mix,
mocca rooted,
lightbernstein rooted,
sandyblonde rooted,
champagne rooted,
pastelblonde rooted,
winered rooted

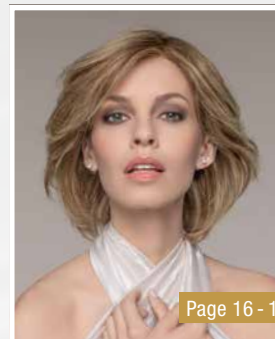


Page 08 - 09

★★★★★))

AWARD

espresso mix,
darkchocolate mix,
chocolate mix,
mocca rooted,
bernstein mix,
sand mix,
sandyblonde rooted,
champagne rooted

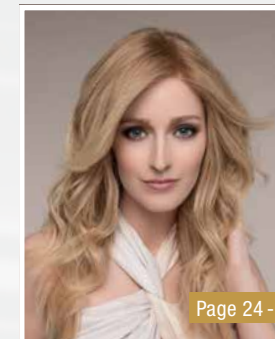


Page 16 - 17

★★★★★))

BRILLIANCE plus

espresso mix,
darkchocolate mix,
chocolate mix,
mocca rooted,
bernstein mix,
sand mix,
sandyblonde rooted,
champagne rooted



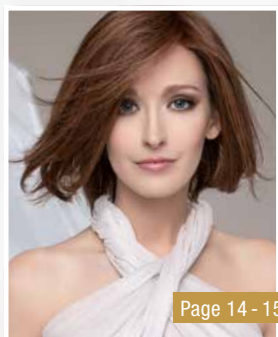
Page 24 - 25

★★★★★))

CASCADE

espresso mix,
darkchocolate mix,
chocolate mix,
hotchocolate mix,
mocca rooted,
bernstein mix,
sandyblonde rooted,
champagne rooted

34

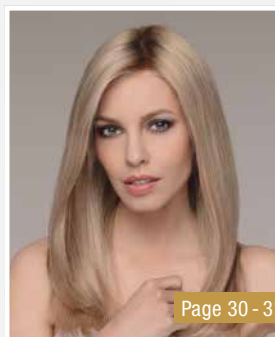


Page 14 - 15

★★★★★))

DELICATE plus

espresso mix,
darkchocolate mix,
chocolate mix,
nougat rooted,
bernstein mix,
sandyblonde rooted,
champagne rooted

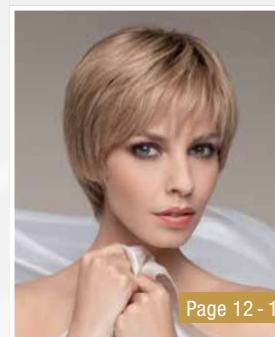


Page 30 - 31

★★★★★))

EMOTION

espresso mix,
darkchocolate mix,
chocolate mix,
hotchocolate mix,
mocca rooted,
bernstein mix,
sandyblonde rooted,
champagne rooted,
pastelblonde rooted

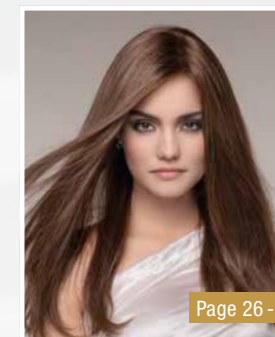


Page 12 - 13

★★★★★))

IVORY

chocolate rooted,
mocca rooted,
lightbernstein rooted,
sand mix,
sandyblonde rooted,
stonegrey mix,
pearlgrey mix

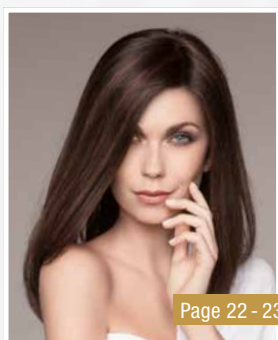


Page 26 - 27

★★★★★))

OBSESSION

espresso mix,
darkchocolate mix,
chocolate mix,
mocca rooted,
bernstein mix,
sandyblonde rooted,
champagne rooted,
cinnamon rooted

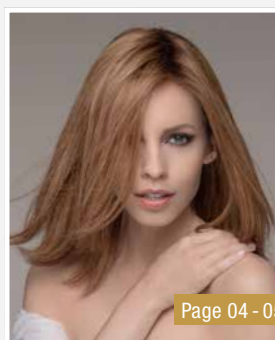


Page 22 - 23

★★★★★))

SPECTRA plus

espresso mix,
darkchocolate mix,
chocolate rooted,
lightbernstein rooted,
sandyblonde rooted,
champagne rooted

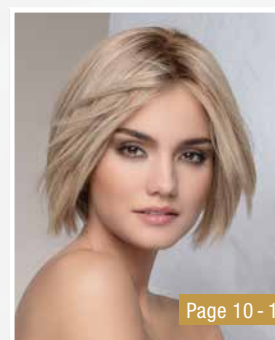


Page 04 - 05

★★★★★))

TRINITY plus

espresso mix,
darkchocolate mix,
chocolate mix,
mocca rooted,
bernstein mix,
sandyblonde rooted,
champagne rooted,
pastelblonde rooted,
softcopper rooted



Page 10 - 11

★★★★★))

WISH

espresso mix,
darkchocolate mix,
chocolate mix,
mocca rooted,
sand mix,
sandyblonde rooted,
pastelblonde rooted,
pearlgrey mix

Pure COLOURS



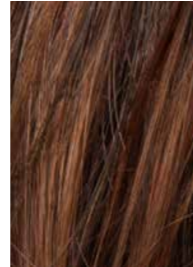
espresso
4.2



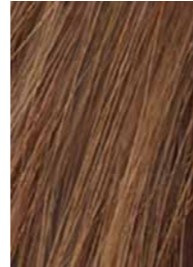
darkchocolate
6.33.4



chocolate
830.6



hotchocolate
33.30.6



mocca
830.12.27



nougat
12.8.20



bernstein
12.830.26



lightbernstein
14.26.27



sand
14.26.12



sandyblonde
20.22.16



champagne
22.26.16



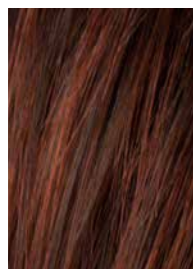
pastelblonde
25.22.26



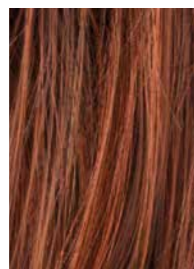
stonegrey
48.38.36



pearlgrey
101.56.48



winered
33.130.4



cinnamon
33.29.30



softcopper
31.27.30

HUMAN HAIR / HEAT FRIENDLY FIBER



stonegrey
48.38.36



pearlgrey
101.56.48

the expert care
for finest

Human Hair

HUMAN HAIR SHAMPOO:

Das selbstreinigende Shampoo bietet Pflege und Glanz für feinstes Echthaar.

The self-cleaning shampoo provides care and brilliance for finest human hair.

HUMAN HAIR BALM:

Der Rückenbalsam kräftigt und entwirrt das Haar. Er sorgt für gute Kämmbarkeit und macht es spürbar geschmeidig.

The wig balm strengthens and untangles the hair. It ensures good combability and suppleness.

HUMAN HAIR INTENSIVE RECOVERY MASK:

Die Intensivpflegemaske versorgt das Haar mit lang anhaltender Feuchtigkeit und wertvollen Nährstoffen.

The intensive care mask provides the hair with long-lasting moisture and adds valuable nutrients.

ANTI STATIC SPRAY:

Das Anti-Statik-Spray erzeugt einen sanften Schutzfilm, der vor Aufladung und Reibung schützt.

The anti-static spray creates a smooth and silky protective film against frizz and friction.

HUMAN HAIR CARE'N REPAIR:

Die Sprühpflege spendet dem Haar Feuchtigkeit, sorgt für Geschmeidigkeit und unmittelbaren Repair-Effekt.

The spray care moisturises the hair, provides suppleness, combability and an immediate repair effect.

HAIR-TIP-LIQUID:

Das Hair-Tip-Liquid schützt strapaziertes Haar vor Spliss. Vitalität und Feuchtigkeit bis in die Spitzen.

The hair tip fluid protects stressed hair from split ends. Vitality and moisture up to the hair tips.

STYLING CREAM:

Zuverlässiger Halt und natürlicher Look. Die Expertenwahl für individuelles Styling.

Reliable hold and a natural look. The expert's choice for individual styling.



finest *Quality*
human hair



Monofilament + 100% handgeknüpft
Monofilament + 100% handmade



Monofilament + Tresse
Monofilament + wefted

Filmansatz
Lace front

Erweiterter Filmansatz
Extended lace front

plus

Anti-Rutsch-Beschichtung. Das Plus an Halt und Stabilität.

Anti-slip coating. The plus in grip and stability.



Für den Remy-Hair-Standard wird ausschließlich hochwertiges Echthaar verwendet. Es ist zu 100% in Wachstumsrichtung verarbeitet, besonders geschmeidig und gut kämmbar.

Only high-quality human hair is used for the Remy Hair standard. It is 100% processed in the direction of growth, particularly supple and easy to comb.

